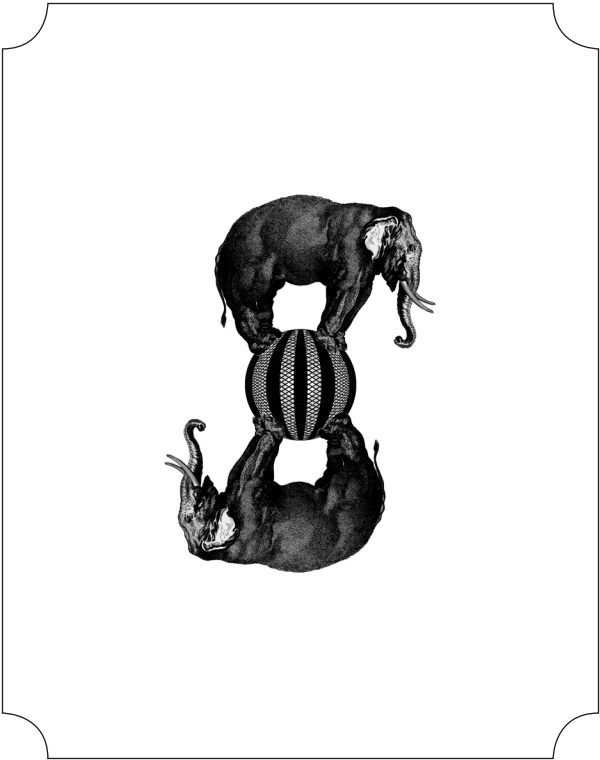


FIRST EDITION





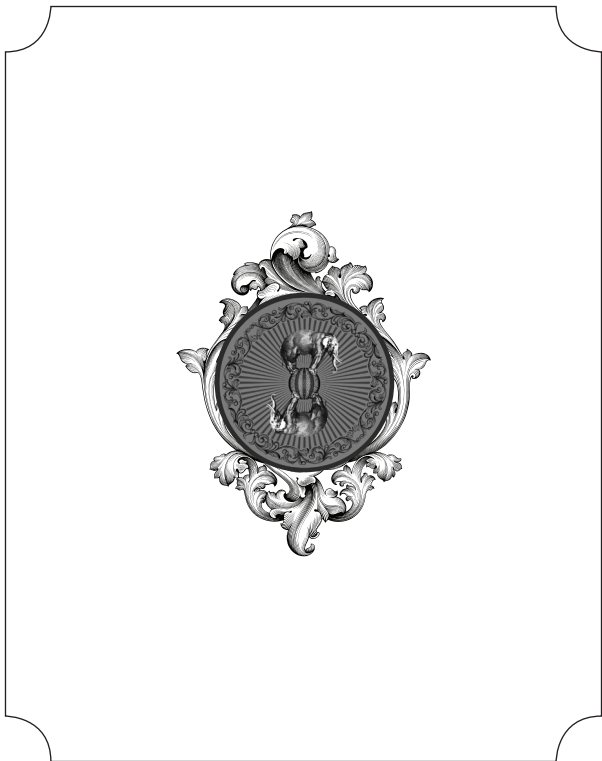



TABLE OF CONTENTS

Introduction.....	7
Know Thyself	8-12
How To Use The Deck.....	13-18
The Cards.....	19-41
The 6 Senses Extra Cards.....	42-45
Thanks	46






**THE
TWO-PENNY
ORACLE**




INTRODUCTION

Dating back to the 1700s and now classified as a defunct pseudoscience, Phrenology was the study of the shape of the skull as indicative of mental faculties and traits of character. Not only did Phrenology enjoy great popularity well into the 20th century, but also found a beloved place in the mysterious world of fortune telling and divination. And now, the Two-Penny Oracle.

Phrenology offers a truly comprehensive division of mental faculties that align beautifully with an oracle system of guide words. With the Two-Penny Oracle, the idea is to see these words as tools — not to *measure* our propensities — but rather to suggest what perspectives we may call upon for a given question or scenario.



KNOW THYSELF



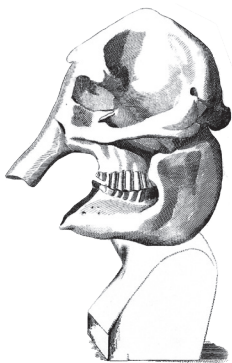
KNOW THYSELF & THE ELEPHANT

The Ancient Greek aphorism "know thyself" is one of the Delphic maxims inscribed in the forecourt of the Temple of Apollo at Delphi. In Latin the phrase, "know thyself," is given as nosce te ipsum or temet nosce. Know Thyself has had a variety of meanings attributed to it in literature with deep roots in the works of Plato and Socrates.

Phrenology popularized the term as a way to promote the self-help aspect of the now pseudoscience. For the Two-Penny Oracle, I chose the elephant as a primary symbol for a very good reason — elephants can recognize themselves in a mirror, joining only humans, apes and dolphins as animals that possess this kind of self-awareness. According to research this would

KNOW THYSELF [CONT'D]

seem to be a trait common to and independently evolved by animals with large, complex brains, complex social lives and known capacities for empathy and altruism, even though the animals all have very different kinds of brains.



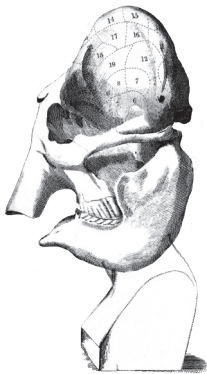
PHRENOLOGY & CONTROVERSY

It is important to acknowledge one truly negative aspect of Phrenology that was misused in its brief history. Aside from ultimately being classified as quackery, the pseudoscience has also been criticized for promoting racial and other prejudices, aligning certain physical qualities with less desirable mental faculties and associating other physical qualities with success, intelligence and happiness. For obvious reasons, this aspect has no place in the world today.

However, defining a full spectrum of propensities has tremendous value in our own self-awareness, development and growth! So to be clear, this deck only uses Phrenology for its comprehensive list of faculties as a system of words and not a tool assigned to any measurement or physical qualities.

PHRENOLOGY & CONTROVERSY

Furthermore, this deck will follow suit from its companion deck, the 5-Cent Tarot, never depicting humans, and only representing animals, insects and florals. As such, we can relate to the messages more readily, without the unnecessary distractions of race or gender.





43

**HUMAN
PROPENSITIES**



KEYWORDS & 43 PROPENSITIES

Traditional Phrenology employs the numbers 1-37 and letters A, B, C, D, E, and F. As this is an oracle deck, the keywords are prompts for a reading and are therefore the hero of the design. In many cases there may be a word you are not familiar with as they are from another time and also in a pseudo-scientific, sometimes clinical vernacular. I hope that this deck also provides some interesting vocabulary side-trips!

True to Phrenology studies, I have also provided adjacent concepts and reversal words that indicate either a negative aspect of a given propensity (too much of anything will skew negative) or sometimes a deficiency or absence of this trait. As with any oracle, you will find the best use of the deck for your own personal practices!

AS A COMPLEMENT TO TAROT

There are countless ways to employ the Two-Penny Oracle for insight and personal growth. One way is to complement just about any traditional (or non-traditional) tarot spread, such as the basic Past, Present, Future 3-card spread. Throwing a single oracle card in the mix can provide perspective and in this case, perhaps the behavior or propensity needed to move on.

MY TWO CENTS TAROT SPREAD

For example, a basic 3-card spread, representing a situation's, past, present and future. Laying out an additional oracle card -- or two, or three -- can help guide the future outcome, directing some insight into the human propensities that can influence your path forward.

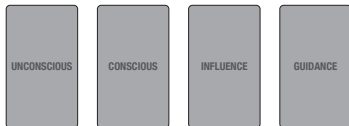


AS A PURE ORACLE READING

The Two-Penny Oracle can obviously be used independently for guidance. This book couldn't possibly scratch the surface of the endless possibilities, so I will simply offer a single spread to get you started.

HEAD SPACE ORACLE SPREAD

For example, this is a basic 4-card spread, representing a given situation or question. The first two cards represent your unconscious and conscious perspectives. The third card, or influence card, suggests opposing or supporting forces, i.e. others' opinions; while the fourth card, or guidance card, suggests a propensity to either dial up or down in order to move forward. Remember, these cards have reversal keywords if you so choose to use them!



EXTRA CARDS: THE 6 SENSES



In this deck, I have added Roman Numerals to represent the 5, actually 6, senses! I created these additional cards to be optional and complementary to the deck -- they are all the same color palette to set them apart, but they use the same graphic system. In a reading these may suggest a sense that needs to be heightened or paid closer attention to. Like the rest of the deck, I have also used the keyword system to present words and ideas that in reverse represent either too much or too little of that particular sentiment. The animals in these cards are known to have the most heightened senses in their category, and the Owl was an obvious choice for the sixth sense, which I call KNOW. Enjoy!

MESSAGE FROM MADAM CLARA

This little white book was created to provide brief insights into my inspiration for each and every one of the cards in the deck. It is not intended to be an in-depth guidebook; rather, a sentence or two for each card to give you an idea of my thought process.

In most cases, I will give you a description of the animal or insect I have chosen and why. Sometimes, it's a specific and obvious reference; other times, it may be more obscure from my own twisted mind.

We all draw from our own personal experiences, connections and teachers who have helped to shape our unique perspective, so I hope you find this deck as a useful tool to enhance your readings.



**CONSULT
THE CARDS**



DOMESTIC PROPENSITIES

AMATIVENESS

Throughout antiquity, the goat and the snake both have a long history and association with sexuality, and here the passion of love and physical (magnetic!) attraction; desire to caress and fondle. In reverse, this propensity can translate to the abuses of licentiousness and obscenity. On the contrary, a deficiency could suggest a strong desire or want of attention.



PHILOPROGENITIVENESS

The spotted eggs and silvery woolly monkey both beautifully represent our instinct for parental love; regard for children, pets, and animals, and attention to their wants. In reverse, this can skew to the abuse: spoiling children by caressing, coddling, or even being overprotective. As a deficiency: neglect of the young and/or not being attentive enough!



DOMESTIC PROPENSITIES

ADHESIVENESS

Historically, dogs were depicted to symbolize guidance, protection, loyalty, fidelity, faithfulness, alertness, and love. Our domestic companion is the perfect depiction of friendship; attachment; affection; desire for society, to congregate, to associate, and to entertain friends. Abuse: Too great fondness for company; indiscriminate connections. Deficiency: Neglect of friends and society.



INHABITIVENESS

There is no place like home! What better creatures to represent our nesting instinct than a beautiful Robin bird. This card suggests a love of home; patriotism; attachment to the place where one lives, or has lived; desire to locate and remain in one place. Abuse: want of patriotism; prejudice against other countries; excessive love of home. Deficiency: Continually roving.



DOMESTIC PROPENSITIES

MATRIMONY

Cardinals represent devotion, loving relationships, courtship, and monogamy above everything else in the Native American lore. When this card appears, we see a desire to pair; to unite for life; and to be constantly in the society of, and to shared with, the loved one. Abuse: Sacrifice of other more important considerations. Deficiency: Want of the conjugal feeling.



CONCENTRATIVENESS

The ram is a long-held symbol of initiative and leadership — Aries energy. This card represents unity and continuity of thought and feeling; disposition to dwell upon one subject until it is completed. Abuse: Prolixity; tedious dwelling upon subjects; inability to change subjects of thought and feeling. Deficiency: Want of mental concentration.



SELFISH PROPENSITIES

VITATIVENESS

The hummingbird arguably has the strongest "joie de vivre" outlook and symbolizes joy and lightness of being. Love of life; desire to exist; dread of death. Abuse: Extreme tenacity of life; over-anxious about health; too great dread of sickness. Deficiency: recklessness as to life and health; unnecessary exposures of health, and exhaustion of vital powers.



COMBATIVENESS

With its biological armor, the armadillo symbolizes self-protection; defense; personal courage; resistance; boldness; resolution; the let-me-alone disposition. In reverse, abuse: Pugnacity; a quick, fiery, ungovernable temperament; a fault-finding, contentious disposition. Deficiency: Want of courage and disposition to contend for rights.



SELFISH PROPENSITIES

DESTRUCTIVENESS

Starling are little birds that travel in huge packs, known for wreaking havoc. Moving in flocks that resemble small black clouds, they descend on farms in search of food.

Here, they symbolize executiveness; indignation; hatred; retribution; and a destroying, pain-causing, exterminating disposition. In reverse, Abuse: Rage; malice; revenge; premeditated cruelty; murder. Deficiency: Extreme gentleness



ALIMENTIVENESS

The ever-hungry and often ravenous wolverine, also known as the glutton, is here to be the most fitting representation of Appetite; desire for nutrition, and enjoyment of food and drink. Abuse: Gluttony, gormandizing; drunkenness; habits of indulging the appetite. Deficiency: Want of appetite.



SELFISH PROPENSITIES

ACQUISITIVENESS

The squirrel and the crow, both collectors of the animal kingdom, here symbolize the desire to acquire and possess money, property; to trade; to save and take care of property; the mine and thine feeling. Reversal, Abuse: Avarice, theft, extreme selfishness. Deficiency: Profuseness; spending money without discretion.



SECRETIVENESS

With their ability to see in the dark, the weasel has a symbolic link to the underworld and the secrets of darkness and creation. This card is about secrecy: concealment; cunning; evasion; policy; management; ability and disposition to disguise. In reverse, Abuse: Hypocrisy; deceit; lying; double dealing. Deficiency: want of tact; too great frankness.



CAUTIOUSNESS

The opossum has a remarkable defense mechanism to literally and effectively "play dead" in the face of danger, and thus, is a perfect ambassador of precaution; solicitude; fear; apprehension; regard for present and future safety; dread of results. In reverse, Abuse: Procrastination; irresolution; timidity; cowardice. Deficiency: Carelessness; heedlessness; recklessness.



APPROBATIVENESS

The proud peacock holds its chest high and fans its feathers to reveal its beauty. This card is about our regard for character and reputation; ambition; affability; desire for popularity, fame and distinction. Abuse: Vanity; extravagantly decorating the person; foppishness; coquetry; extravagant desires to acquire notoriety. Deficiency: Indifference to public opinion, and disregard for appearances.



SELF ESTEEM

The show horse in all its majesty proudly suggests a sense of self-respect; dignity; dependance; love of liberty and power; self-reliance; desire to rule and command respect.

For reversals, Abuse: Pride; arrogance; egotism; and aristocratic, domineering, ruling spirit. Deficiency: Want of dignity, self-respect, and personal improvement.



FIRMNESS

Stubborn as a mule is that age-old saying that comes to mind here. This card is about will; decision; stability; perseverance; determination; fixedness of purpose, and unwillingness to yield or change; fortitude. Abuse: Obstacity; willfulness; a blind adherence to present opinions, in opposition to reason. Deficiency: want of decision and stability of mind.



MORAL SENTIMENTS

CONSCIENTIOUSNESS

The almighty lion — lover of justice — shows us a sense of moral obligation; regard for duty; justice; integrity; right; penitence for sin.

In reverse, abuse: Self condemnation; excessive scrupulousness; useless remorse; making too little allowance for the faults and foibles of others. Deficiency: Unprincipled conduct; dishonesty.



CIRCUMSPECTION

Aided with an ability to move forward only, the grasshopper suggests advance thinking and enlightenment and symbolizes so many things, including stability, security and freedom. This card is about the balancing act of discretion; consistency; uniform; balancing, regulating power, and desire to harmonize the character. Deficiency: Want of discretion in word and act.



HOPE

In Aesop's fables, the swallow symbolizes hope, as it is among the first birds to appear at the start of spring. Sense of immortality; of a future state; confidence in success and happiness. Abuse: Unreasonable hopes; extravagant plans with reference to the future; anticipations that cannot be realized; trusting to chance without the proper means. Deficiency: Gloom; despondency; want of confidence in the future.



MARVELLOUSNESS

Cicadas and dragonflies are replete with symbolism: immortality, spiritual realization and spiritual ecstasy. Here, it's about Faith; belief in Divine Providence; sense of the omnipresence of God; of spiritual existence; wonder; surprise; love of the marvelous and new. Abuse: Belief in ghosts and witchcraft, and confiding too much in spiritual influences. Deficiency: Skepticism; rejection of common evidences.



MORAL SENTIMENTS

VENERATION

Egret is known to stand in the physical and spiritual worlds and helps look deeper into aspects of life. This card can reflect a worship of God, or the concept of a higher being; feeling of devotion and respect; regard for superiority, things sacred, authority, and antiquity. In reverse, Abuse: Idolatry; superstition; worship of unworthy object. Deficiency: Disregard for sacred things; disrespectful.



BENEVOLENCE

The monkey and angelfish, of two worlds, but representing the same kindness; humility; sympathy; pity; disinterestedness of feeling; munificence; desire to make others happy, and do good. In reverse, or abuse: Giving alms to the vicious; so great sympathy and tenderness of feeling, as to be overcome by the sight of suffering; giving without discretion. Deficiency: Disregard of the wants, feelings, and happiness of others.



CONSTRUCTIVENESS

The ever-fascinating spider, daily orb-weaver and creator, symbolizes contrivance; skill; ingenuity; desire to use tools and understand machinery; manual dexterity. In reverse, Abuse: Wasting time and money to try experiments; getting out useless patents; trying to invent perpetual motion. Deficiency: want of contrivance, tact, and skill in the use of tools, or manual dexterity.



IDEALITY

The beautiful swan is a symbol of purity, grace, love and elegance. This card shows up for an affinity for refinement; delicacy of feeling; taste; love of perfection in nature, art, and composition; ecstasy. Abuse: Ideal reveries; sickly sentimentalism; extravagant love of romance, poetry, theatre, imagery; disgust for common affairs. Deficiency: Want of taste and regard for the arts and improvement.



SUBLIMITY

Jellyfish move in harmony with the currents of life, showing us how to flow with nature. Here, they represent a sense of the vast, grand, sublime, extravagant, terrific, endless, the wild romantic in nature, art and composition, particularly natural scenery. In reverse, Abuse: Extravagant representations; excessive fondness for natural scenery. Deficiency: disregard for the sublimities of nature and art.



IMITATION

The incredible mockingbird is a fitting symbol of imitating, copying, and representing; versatility of action; doing as others do; describe and act another's part. In reverse, abuse: Mimicry; copying the faults of others; servile imitation. Deficiency; Want of the ability to conform, and of proper regard for the manners and customs of society.



PERFECTIVE SENTIMENTS

MIRTHFULNESS

The hourglass dolphin, a playful sea creature that reminds us to approach life with humor and joy. Here, a sense of the absurd; ability to joke, make fun, and ridicule; gaiety; levity; playfulness; humor. Abuse: Making sport of serious and important things; ridiculing truth. Deficiency: neglect of sport and amusement; want of the power to condense ad present ideas agreeably.



OBSERVING AND KNOWING FACULTIES

INDIVIDUALITY

The giraffe, or Africa's gentle giant, symbolizes individuality, and the ability to see the future and obtain things that would normally be out of reach. Here, the observation of things, and power to examine; to identify individual objects; to be an eyewitness; curiosity. In reverse, the lack of this curiosity, or the overabundance of it.



FORM

Octopus symbolizes flexibility, expansion and unpredictability. As invertebrates, they are not limited by a spinal column, and therefore can move freely through a tight spot in recognition of shape, likeness, or outline. This card also represents our ability to commit to memory. In reverse, however, this could suggest a repression of memory, or even presumptuousness.

**SIZE**

The amazing puffer-fish has an uncanny ability to defend itself by inflating its body by sipping water or air causing it to become rounder — perfect to symbolize our Perception of bulk, magnitude, and proportion; ability to judge of length, breadth, height, angles, perpendiculars, and distances. In reverse, a suggestion of blowing out of proportion, or, conversely, underestimating.



WEIGHT

It is no surprise that the Blue Whale with its size is also the heaviest mammal on Earth. Here, this beautiful creative represents our ability to manage and distribute our weight and sense of gravity, and power to apply its principles to machinery and muscular motion; balancing; walking on ice, for example. In reverse, instability or our desire to assign weight or importance to situations.



COLOUR

The parrot -- and its undersea namesake -- represent the positive energy associated with a sense of colour, different shades, and harmony in arrangement in nature and painting; delight in seeing colour. On another level, we have colour in the sense of character or, when in reverse, a pretty lie or exaggeration.



OBSERVING AND KNOWING FACULTIES

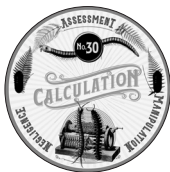
ORDER

The intricate and perfect patterning of snakeskin here represents our appreciation for order — arrangement; system; neatness; method; desire for convenience and method, and economy in business operations. In reverse, the chaos of disarray, or conversely, too much order, or rigidity.



CALCULATION

With their abundance of legs, the millipede and centipede represent big numbers in the insect realm. Here, our perception of numbers and their relations; numerical computation; ability to reckon figures in the head. In a reading, this card could suggest assessment, perhaps financial or calculation in the deliberate sense, and in reverse to the extreme of manipulation.



OBSERVING AND KNOWING FACULTIES

LOCALITY

The goose and the camel both have an association with place and direction. This card can suggest a memory of where we have seen persons and things; the geographical faculty. It may also suggest our internal bearings, and in reverse, our tendency to digress, or even become disoriented.



EVENTUALITY

The jovial sea lion has an innate curiosity and natural interest and sense of active events; love of experiments; desire for knowledge and information; fondness for narrations of occurrences. In reverse, this can translate to an overexuberant curiosity, or intrusiveness, or conversely, a disinterest in active events.



OBSERVING AND KNOWING FACULTIES

TIME

The snail is known to take its time and take things as they come. As such, this card can acknowledge chronology; the duration and lapse of time; memory of when, and how long; equality in step, and the beat in music. In reverse, it may suggest the need for a sense of urgency, or perhaps, the concept of inopportunity, or bad timing.



TUNE

The lyrebird and the lark are two unique birds, each with a musical connection. Lyrebirds resemble the instrument itself. Larks are known for their melodious singing — and sing while they are flying, unlike most other birds, who only sing when perched. This card suggests resonance and a perception of sound, melody, and proper emphasis in reading, speaking, or singing. In reverse, quietude, or even dissonance.



OBSERVING AND KNOWING FACULTIES

LANGUAGE

Making a second and slightly different appearance in the deck is the parrot, for its remarkable ability to talk; on a deeper level, this card is about the ability to articulate, to communicate ideas; to use appropriate language; versatility of expressions; memory of words. In reverse, this card may suggest a negative connotation of affectation, or even silence and refusal to talk.



REFLECTIVE OR REASONING INTELLECT

CAUSALITY

The bat signifies change and asks that you pay attention to signs around you. This card represents our sense of reason; perception of the causes of things; the why and wherefore; power of abstract thought; penetration; planning; originality. In reverse, illogic and/or irrationality may be coming in to play.



COMPARISON

The meaning of the zebra speaks about keeping your individuality, encouraging you to embrace the traits and qualities that make you unique. As such, this card calls out our sense of resemblance; ability to analyze, classify, compare, infer; critical acumen; inductive reason. In reverse, we find discrepancy, or exaggeration of negative uniqueness, or idiosyncrasy.



SUAVITY

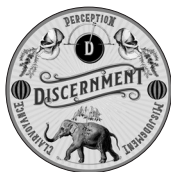
The chameleon is highly adaptive and therefore, agreeable in any company, or change of circumstance. This card can suggest our intuitive perception of results; power to perfect and apply an argument; ability to so act and speak as to accomplish a desired end. In reverse or a negative light, this agreeableness can sometimes come across as condescending, or disingenuous.



REFLECTIVE OR REASONING INTELLECT

DISCERNMENT

Ironically also known as Human Nature, this card represents our capacity to judge of the true motives, characters, and intentions of others, aside from their actions; perception of thoughts and desires unexpressed; the faculty of like and dislike. Here, our heroic elephant quietly shares these insights. In reverse, this card may either suggest a knowing beyond our comprehension, such as clairvoyance, or a lack of discernment, resulting in misjudgment.





SIGHT

The term *eagle eye* is rooted in the truth of this creature's remarkable range of vision, as much as eight times sharper than our own. Taken on another level, this card can suggest our ability to see, or in reverse, inability or unwillingness to see, such as tuning a blind eye.



HEARING

The greater wax moth holds the title for best hearing in the animal kingdom, a skill they use to stay on alert and avoid becoming prey to the bats! As such, this card is all about alertness, and in reverse can suggest a deaf ear to a situation, or a distractedness that has resulted in vulnerability.



OLFACTION

Bears have the strongest sense of smell — 2,000 times better than ours. This enables them to avoid danger, hunt for food and know where their cubs are at all times. This card can allude to a sleuthing nature, or in reverse, a nosiness, or even noseblindness in some cases.



TASTE

With its signature whiskers, catfish have over 10 times the number of taste buds than humans. This heightened sense allows them to seek out and find a food source. So, this card may suggest a need to savor a situation, or in reverse, the concept of predilection -- a liking or bias we may harbor -- or even blandness (lack of taste at all).



TOUCH

Manatees have the incredible ability to touch at a distance, meaning they can feel things without even touching them. This card may suggest a need for or presence of sensitivity. In reverse, this could be an oversensitivity or a tenseness, or even a numbness to a situation.



KNOW

The sixth sense, or ESP, takes us beyond the comprehension of 5 physical senses to a place of just simply and sometimes inexplicably, knowing. Extra-sensory intuition has long been associated with the owl, perhaps due to its piercing gaze. In a reading, this card may also refer to simple and general instinct, or more intensely to premonition.



THANK YOU

A special thanks to all who supported this deck in its inaugural run. None of this would be possible without your encouragement and enthusiasm along the way.

Many design decisions were made by consulting the group, so you can all feel like you were very much a part of the final creation.

— Madam Clara

GRATITUDE





MADAM
CLARA

